

GET THE LOOK & FIND INSPIRATION

# Dwellings

Design | Solutions | Environment



## Destination Relaxation

PHOTOGRAPHY BY DE MAIO PHOTOGRAPHY

Eastern-influenced architecture by Deep River Partners frames the entry to the great room of this family vacation home on Lake Michigan. See more of this project on the following pages.

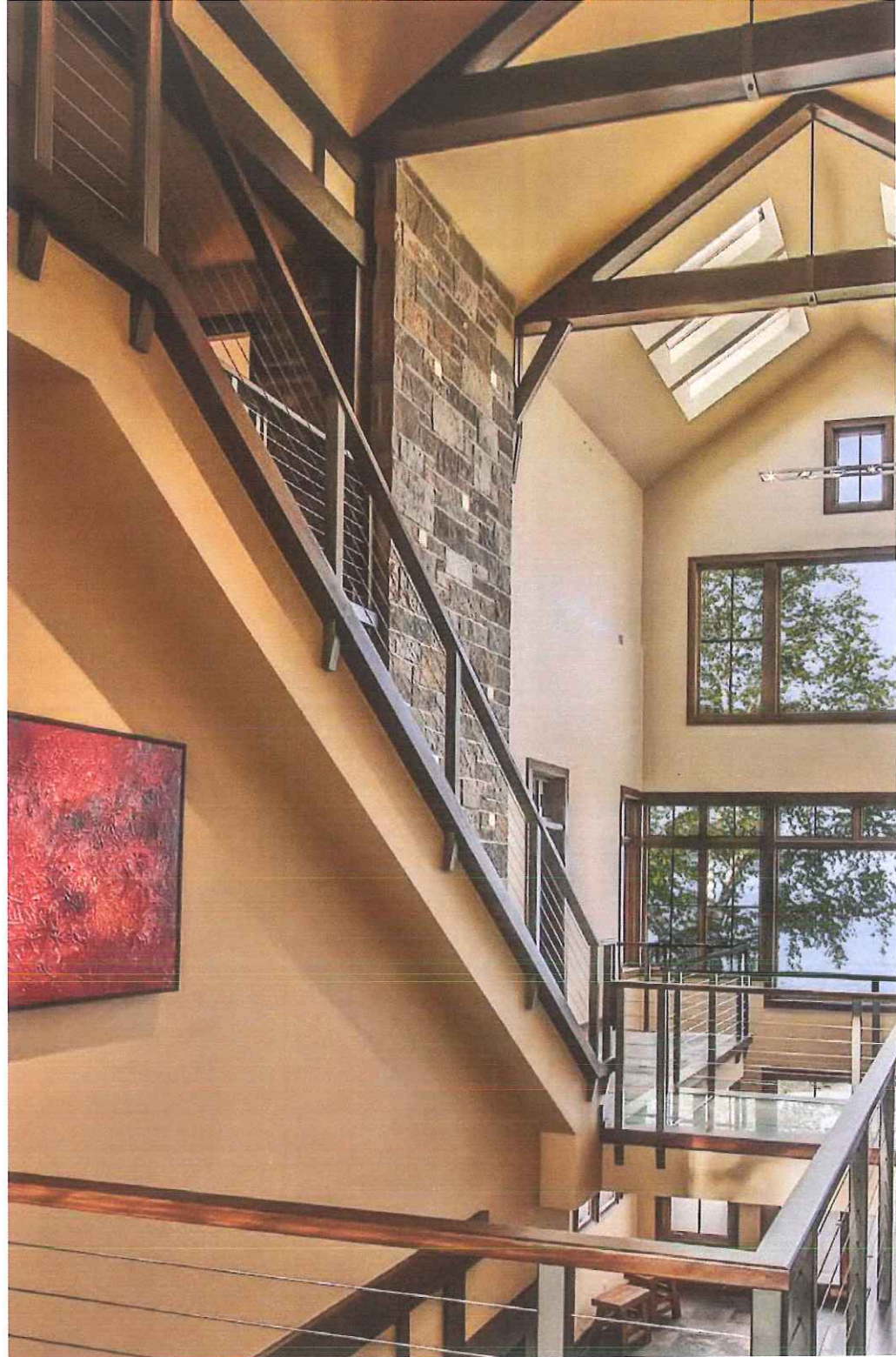


A photograph of Pat and Louise's cottage on the shores of Lake Michigan just north of Milwaukee hangs on the wall of their master bedroom. The beloved cottage gave way to this new vacation home for the Hinsdale, Ill., family — an impressive 10,000-square-foot house designed by Deep River Partners architects that redefines the concept of a lake cottage. Its modern rustic style is North Woods Wisconsin meets Colorado ski lodge.

Even though the structure has changed, the spirit of the original house is intact. "I was worried when we built the new house it would separate me from the things that center me," Louise says. "But the same reasons we love being up here are the same as in the old house," she says. "It's the surroundings."

Opposite page: dramatic architecture through the main corridor of the house frames views of lake michigan. It is the first view for visitors to the home designed by deep river partners architects. "The entry brings users from the wooded west side of the property to the lake," says associate designer nick blavat. Sounds of trickling water from the lower level atrium draw visitors downstairs where they find a meandering water feature that stretches the length of the house to a beachside exit.

This page: (clockwise from top) outdoor living is at its best from the raised terrace that





Opposite Page: Built-in window seats offer additional seating in the great room and panoramic views of Lake Michigan.

The restful sounds and ever-changing views of Lake Michigan are part of the master suite experience. The fireplace mantel and surround are made from Waukesha white stone. The painting is by Peter Kudlata, owner of Flagstone Landscaping.

This Page, (clockwise):

The lake experience continues in the master bath where a riverstone floor and blue tile walls replicate the sand and the lake. A window inside the shower maintains privacy while strengthening the connection to nature.

A 14-foot long custom live edge dining table and bench made from a black walnut slab accommodate large family gatherings, which can often number 20-plus people. The chandelier becomes a conversation piece as it holds notes from guests about their experience at the lake. Deep River Partners' principal Susan Sherer assisted with the interior design prior to retiring; Trace Burger came on board to finish the project.

The professionally outfitted kitchen is designed to allow lots of people to participate in the cooking process. The vaulted ceiling with windows floods the room with natural light. Steven Klein of Klein Lighting designed the lighting plan for the home, which includes task lighting around the perimeter of the kitchen.



ring keeping the cottage and building a property, but Louise didn't want to lose the feeling centering seeing that vast expanse rise says. "It gets me out of myself and my

family gatherings since the house was complete and nine dogs last Christmas. One of the felt more like home, the one in Hinsdale lake home. "I said, 'I can't believe I'm going to the place we are going to gather,'" Louise says, noting that's true for both her and quadrupled it this year. I started baking

beach. "He doesn't do any of that at home so here. He loves little projects; for him that about his work."

to retire; accessibility and even an elevator she did build it for our old age," Louise says. From my experience is she can still appreciate the sure I'm sitting by a window because I

Above: The homeowners took great care to preserve the large oak tree on the property in the design and construction of a new lake house. Limestone retaining walls, cedar siding, a metal roof and Chilton stone veneer blend modern and rustic elements in the design.

Architect: Deep River Partners, Milwaukee  
 Builder: RP Custom Homes, Mequon  
 Landscaper: Flagstone Landscaping, Cedarburg  
 Interior Design: Susan Sherer, Trace Burger, Deep River Partners

Opposite Page: A lower level terrace is designed for younger family members to sit around the fire pit while still being in proximity to the rest of the group. The porch above connects to the master bedroom suite. Fond du Lac stone is used extensively in the landscaping.

The sitting room includes a banquette area. The room was originally designed as a screen porch, but the homeowners wanted it to be enclosed for year-round enjoyment.

